



 TETRA TECH


Pike County Hazard Mitigation Plan (HMP) 2021 Update

Steering Committee Kickoff Meeting | June 24, 2021


complex world | CLEAR SOLUTIONS™

2

Agenda



- Welcome and Introductions
- Benefits of Hazard Mitigation
- Project Scope
- Hazards of Concern
- Problems and Problem Areas
- Planning Team Members
- Public and Stakeholder Outreach
- Meeting Strategy
- Project Schedule
- Next Steps
- Questions

 TETRA TECH

3

3



Introductions

- Tell us...
 - What's your name?
 - What is your mitigation experience?
 - What do you want to focus on during this process or what is your area of expertise?
 - What are your *natural hazard risk concerns or resilience goals* for Pike County?



Hazard Mitigation – What is it?

Mitigation is a sustained action taken to reduce or eliminate long-term risk to life and property from a hazard event

-or-

Any action taken to reduce future disaster losses

“provides the blueprint for reducing the potential losses identified in the risk assessment, based on existing authorities, policies, programs and resources, and local ability...” (CFR).





Does Mitigation Work??

- According to the January 2019 National Institute of Building Sciences Natural Hazard Mitigation Saves: 2018 Interim Report, federal mitigation grants save \$6 for every \$1 spent!

**More Mitigation Measures,
More Savings**



**One dollar invested in mitigation =
six dollars U.S. saves in future costs**

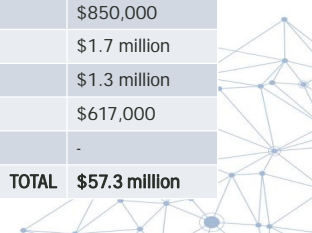


Why Update?



- The mitigation plan update will:
 - Help the County prepare for and mitigate the effects of disasters
 - Continue to allow the county and participating partners to be eligible for pre- and post-disaster mitigation funding
 - Support CRS participation/rating of municipalities
- What is at risk in Pike County?

Hazard	Losses
Blizzard	\$400,000
Cold/Wind Chill	\$15,000
Drought	\$200,000 (crop)
Excessive Heat	-
Flood/Flash Flood	\$52.3 million
Hail	\$15,000
Heavy Rain	-
Hurricane/ Tropical Storm/ Tropical Depression	-
Lightning/ Thunderstorm	\$850,000
Tornado/Funnel Cloud	\$1.7 million
Wind	\$1.3 million
Winter Weather	\$617,000
Wildfire	-
TOTAL	\$57.3 million



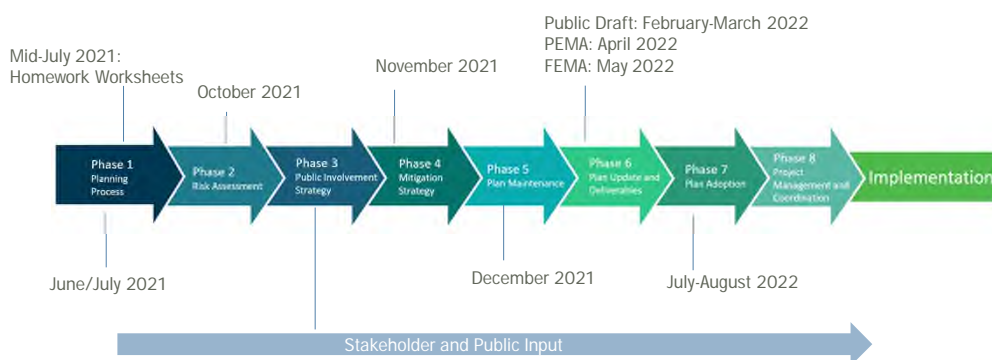


Planning Team Members



8

Planning Process Overview

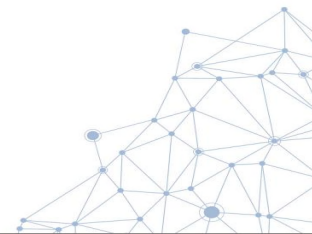


9



Project Scope

- Update the Risk Assessment
- Update the Capabilities Assessment
- Update the Mitigation Strategy
- Update Other Sections of the HMP
- Submit the HMP for Review
- Adopt the HMP
- Implement the HMP



Hazards of Concern and Risk Assessment

- Update assets
- Examine previous impacts
- Analyze risks
- Review with Steering Committee
- Risk Assessment Meeting





Hazards of Concern



2017 County HMP	2019 State HMP	2021 County HMP Update
Drought	Drought	Drought
Drowning	-	Drowning
Earthquake	Earthquake	Earthquake
Environmental Hazards (Hazardous Materials Release, Oil and Gas Wells, Pyrite)	Environmental Hazard – Coal Mining Environmental Hazard - Conventional Oil and Gas Wells Environmental Hazard – Gas and Liquid Pipeline Environmental Hazard – Hazardous Materials Releases Environmental Hazard – Unconventional Wells	Environmental Hazards (Hazardous Materials Release, Oil and Gas Wells, Pyrite)
Extreme Temperatures	Extreme Temperature	Extreme Temperature (heat and cold)
Flood	Flood, Flash Flood, Ice Jam	Flood (riverine, flash, stormwater, and ice jam)
Hurricane, Tropical Storm, Nor'easter	Hurricane and Tropical Storm	Hurricane, Tropical Storm, Nor'easter
Invasive Species	Invasive Species	Invasive Species and Harmful Algal Bloom
Landslide	Subsidence and Sinkholes	Geologic Hazards (landslides, subsidence/sinkholes)
Lightning	Lightning Strike	Combine with Severe Weather
Nuclear Incidents	Nuclear Incidents	Nuclear Incidents
Pandemic	Pandemic and Infectious Disease	Disease Outbreak/Pandemic
Radon Exposure	Radon Exposure	Radon Exposure
Terrorism	Terrorism	Terrorism
Tornadoes and Windstorms	Tornadoes and Windstorms	Severe Weather (thunderstorms, lightning, hail, wind)
Transportation Accidents	Transportation Accidents	Transportation Accidents
Urban Fire and Explosions	Urban Fire and Explosions	Urban Fire and Explosions
Utility Interruptions	Utility Interruptions	Utility Interruptions
Wildfire	Wildfire	Wildfire
Winter Storm	Winter Storm	Severe Winter Weather (heavy snow, blizzards, ice storm)

12

EXERCISE – Identifying Hazards of Concern



- **Looking at the hazards included in the 2017 plan...**
 - Have additional hazards impacted the County since 2017?
 - Have hazard been mitigated and no longer cause damage?
 - Should hazards be regrouped to align with the 2019 State HMP?
 - Should additional hazards be included?
- **How have hazards affected the county? Where are your problem areas?**
- **Quick survey!**
 - We will send around a quick online survey (<https://forms.gle/mpDyoygjUEXshicj7>) to get your input on the hazards of concern for the 2022 HMP

13



Critical Facilities and Lifelines



- Review the 2017 critical facility inventory to ensure complete
- Crosswalk and identify lifelines
- Protecting these facilities should be a priority for hazard mitigation

Critical Facilities are those facilities considered critical to the health and welfare of the population and that are especially important following a hazard. As defined for this HMP, critical facilities include essential facilities, transportation systems, lifeline utility systems, high-potential loss facilities, and hazardous material facilities.

Essential facilities are a subset of critical facilities that include those facilities that are important to ensure a full recovery following the occurrence of a hazard event. For the County risk assessment, this category was defined to include police, fire, EMS, schools/colleges, shelters, senior facilities, and medical facilities.

Lifelines provide indispensable service that enables the continuous operation of critical business and government functions, and is critical to human health and safety, or economic security



Critical Facilities and Lifelines



- Airports/Heliports
- Bridges
- Child/Adult Day Cares
- Correctional Facilities
- Dams
- Electric Grid/Powerlines
- Fire Stations
- Government Offices
- Historic Sites
- Historic/Cultural Resources
- Local Streets
- Major and Minor Highways
- Natural Gas Pipelines
- Nursing Homes/Senior Care/Senior Centers
- Oil Pipelines
- Parks (county, municipal and state)
- Police Stations
- Railroad Line
- Schools
- Search and Rescue / EMS
- Shelters
- Wastewater Treatment Plans
- Wireless Facilities





Goals and Objectives

- We need to review the goals and objectives from the last plan and decide whether or not we want to add or modify goals. We will send an online survey (<https://forms.gle/i3B4AN4NT5tHVz798>) around to get your input.

Goal #	2017 HMP Goal Statement	Modify, Add, or Remove?
1	Provide for properly managed and environmentally sound growth and disaster-resistant development.	
2	Reduce the potential impact of natural and human made hazards on property.	
3	Enhance and improve emergency services provided to the growing population of Pike County.	
4	Reduce vulnerability including loss of life and damage to assets and the environment from natural and human-made hazards.	Revise to follow the 2019 PA HMP <i>Protect lives, property, environmental quality, and resources of Pike County from natural and human-made hazards.</i>
5	Conserve, protect, restore and enhance existing natural systems and water resources that serve a natural hazard mitigation function.	
6	Increase awareness, understanding, and preparedness across all sectors by encouraging hazard risk, preparedness, and mitigation related education, training and outreach activities.	
Additional Goals?	Address Long-Term Vulnerabilities from High Hazard Dams	

16



Public and Stakeholder Outreach

- HMP Project Website
 - We developed a website just for the HMP - <https://www.pikecountypahmp.com/>
- Social Media
- Stakeholder Survey
- Public Survey
- Stakeholder Outreach –
 - Neighboring Counties and Stakeholders were notified of the planning process



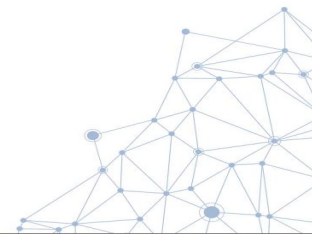
17



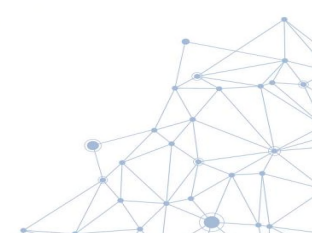
Next Steps

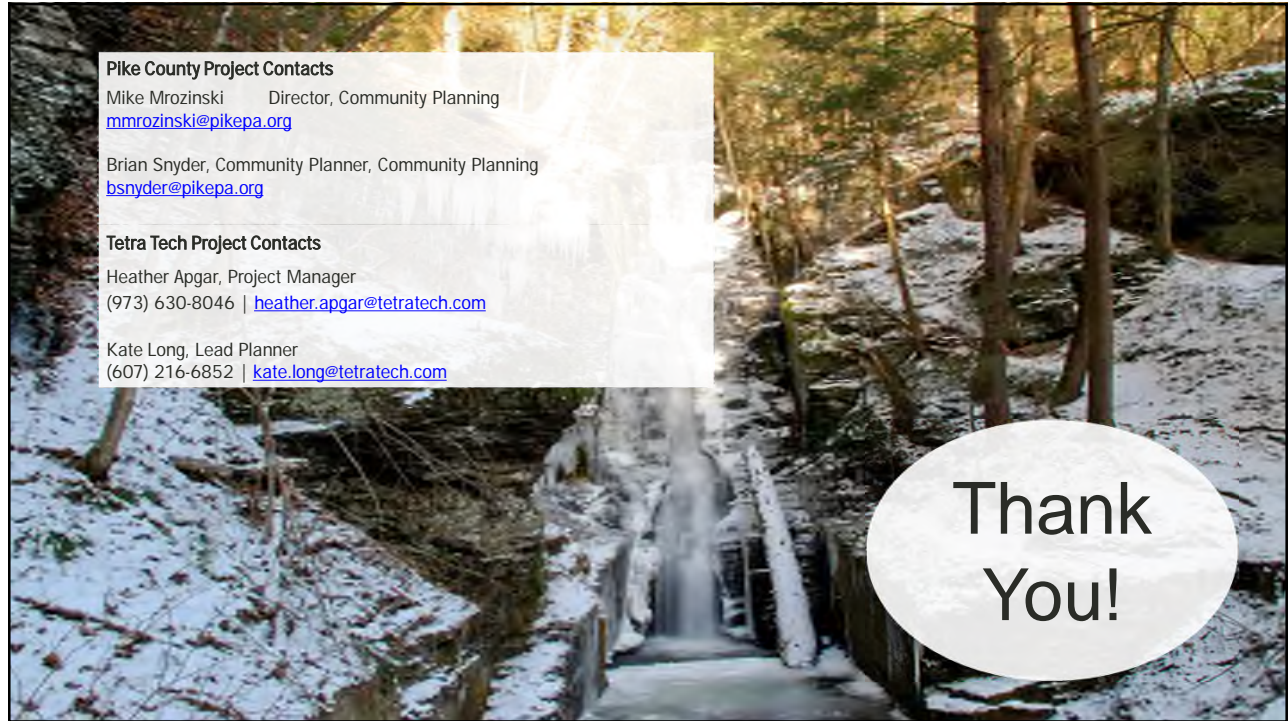


- Take online survey re: update of goals – *to be distributed via email*
- Planning Team Kickoff (Steering Committee and Municipalities): July 1st at 1:30pm
- Risk Assessment Meeting: October 2021
- Mitigation Strategy Workshop: November 2021



Questions?





Pike County Project Contacts

Mike Mrozinski Director, Community Planning
mmrozinski@pikepa.org

Brian Snyder, Community Planner, Community Planning
bsnyder@pikepa.org

Tetra Tech Project Contacts

Heather Apgar, Project Manager
(973) 630-8046 | heather.apgar@tetrattech.com

Kate Long, Lead Planner
(607) 216-6852 | kate.long@tetrattech.com

Thank
You!